



chicagobotanic garden

# Pollinator Match-Up

Read the descriptions and match each insect to the flower that it will find most attractive. There may be more than one right answer, so try to find the BEST match for each bug.

A flower's size, shape, color, scent, and even how it attaches to the stem are adaptations to attract pollinators. Some flowers, like daisies, have a regular shape that attracts lots of different kinds of insects. Some flowers, like certain orchids, are so special that they only attract one species of insect.

Scientists believe that the corpse flower attracts carrion beetles and flesh flies, but to date, they have not observed these insects visiting the flowers in the wild. There is so much we have yet to discover about titan arum and other plants!



## 1 Bee

I'm attracted to sweet perfume. I like blue, yellow, purple and ultraviolet that you cannot see. I eat nectar and pollen.



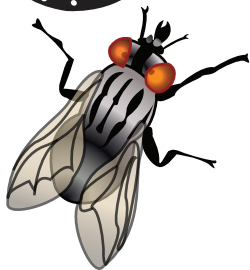
## 2 Moth

I look for white, yellow, or very pale colors and a strong sweet odor in the fading, evening light. I'll sip nectar while I'm flying.



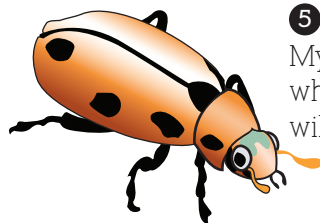
## 3 Butterfly

Give me a sturdy platform to stand on and a bunch of sweet smelling red, orange, or purple flowers to sip and I'll be content.



## 4 Fly

I don't have a sweet tooth. I need to find something dead to lay my eggs on so they can eat and grow up strong.



## 5 Beetle

My favorite colors are green and white, and I love fruity smells. I will eat all parts of the flower.

## 1 Evening Primrose

My beautiful yellow petals and strong scent will intoxicate you and guide you to my nectar. Each sip provides some extra energy for flying.

## 2 Jack in the Pulpit

I'm not a flower. I'm a dead animal lying on the forest floor. Just take a whiff of my mildly stinky odor, and check out the flesh colored stripes.

## 3 Magnolia

I'm huge, white, and showy, and I don't last very long. You can nibble on my petals for some extra food.

## 4 Milkweed

We are a dozen little, sweet-smelling purple flowers in a bundle. You can land on us and take sips from our cup-shaped petals.

## 5 Catmint

I am deep purplish-blue, and I smell like a sweet, fresh mint. You're welcome to take some pollen, too.

