



Questions? Contact Tree Sturman,
tsturman@chicagobotanic.org (847) 835-8343

Green Architecture:

Turning your classroom inside out!

(Each submission may be created by one or many students.)

A maximum of 125 points may be assigned to each 2-D entry.

A maximum of 175 points may be assigned to each 3-D entry.

Up to two 2-D and two 3-D entries may be accepted from each school.

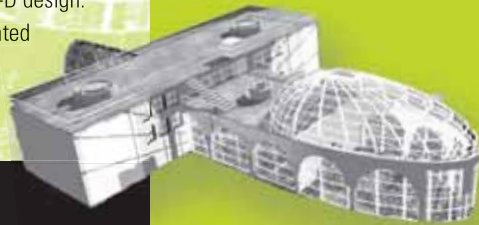
Your challenge:

Develop a design for the renovation of an existing classroom space into an environmentally friendly “indoor/outdoor” classroom. Your design must incorporate principles of Leadership in Energy and Environmental Design (LEED) from the US Green Building Council: www.usgbc.org.

How student entries will be evaluated

Entries (2-D or 3-D) will be reviewed for creativity, functionality of spaces, choice of materials, presentation and adherence to the above-mentioned guidelines.

- 3-D designs will be evaluated for the qualities above, as well as for the students’ ability to correlate their models to their 2-D design.
- 2-D and 3-D designs will be evaluated separately.



Model designed by Jennifer Carrasco, Lane Tech College Prep

Guidelines

- Student designs must encompass no more than 10,000 square feet.
- Students may submit their work in either the 2-D **or** 3-D design sub-categories.

2-D design

- Entries must include a plan view, elevation, and perspective drawings/renderings.
- Entries may be hand drawn or computer designed and must be mounted on no more than two 30” x 40” foam core boards.
- These boards must separate or fold together to no larger than 30” x 40” x 3” for transportation and storage. Hand-drawn entries should be rendered on cotton vellum, art quality paper, or better.
- Drawings/renderings must be to scale.

3-D design

- Entries must include ALL THE COMPONENTS of the 2-D design with the addition of a three-dimensional scale model of this design.
- Entries may be no larger than 30” x 40” x 36”.
- Models must be constructed from at least 25% recycled materials.
- All entries (2-D or 3-D) must be accompanied by a separate document containing an annotated list of the TYPE AND LOCATION of the environmentally friendly materials and methods employed by the design.

Entries must be submitted by April 9, 2008.