



# Chicago Botanic Garden

Display Garden Annuals  
Spring 2011

**BUEHLER**

**126 Vista View Pots  
Entrance to Pergola**

*Viola hybrid Etain* Viola

*Molucella laevis* Bells of Ireland



Trailing Dark Blue Lobelia

Narcissus tripartite

**126 Vista View Pots  
East and West End of Vista, Vista Point**



Primula Chic in Yellow Clear crystals White'

*Lobularia maritima* Alyssum

*Fritillaria imperialis*  
Aurora



Lupinus Texensis

*Viola cornuta* 'Venus Deep Orange'

**126 Vista Pots Corners of Pergola for 22" p** *Erysimum* Lemon Zest Wallflower



Primula Chic in Blue

*Lobularia maritima* Alyssum  
Clear crystals White'

*Erysimum* Lemon Zest Wallflower

*Lactuca sativa* Gold Rush



Lupinus Texensis

For 18" pots



Calibrachoa x Superbells Trailing White

Papaver nudicaule Champagne Bubbles Orange



Lupinus Texensis



Molucella laevis Bells of Ireland

Vista Pan Beds 127



Tulipa 'Professor Rontgen'



Tulipa 'Andre Rieux'



Muscari armeniacum



Linaria hybrida 'Enchantmer'



Erysimum Citric



Lactuca sativa 'Revolution'



Beta 'Bright Lights'  
CC N/E Raised Bed  
118



Pisum sativum 'Sugar Lace II'



Coriandrum sativum 'Santo'



Lobularia maritima  
'Clear Crystal White'



Brassica junco  
'Green Wave'



Tulipa 'Professor Rontgi'



Antirrhinum majus  
'Solstice Orange Tricolor'



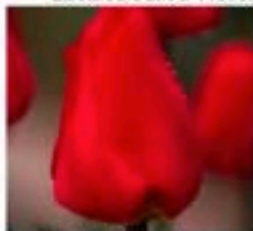
Papaver nudicaule  
'Champagne Bubbles  
Orange'



Lactuca sativa 'Revolution'



Viola x wittrockiana  
'Whiskers Orange'



Tulipa 'Apeldo'



Tulipa 'Kingsblood'



Antirrhinum majus  
'Solstice Red'



Viola x wittrockiana  
'Panola XP Scarlet'



Hyacinthus orientalis  
'Red Diamond'

**CC NW Raised Bed  
118**



*Lobularia maritima*  
'Clear Crystal White'



*Brassica juncea*  
'Green Wave'



*Hyacinthus orientalis*  
'Peter Stuyvesant'



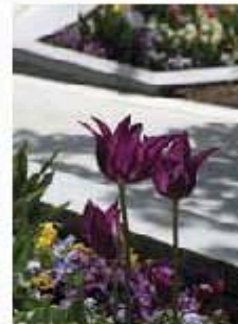
*Hyacinthus orientalis*  
'Crystal Palace'



*Antirrhinum majus*  
'Solstice Purple'



Tulip 'Paul Scherer'



Tulip 'Purple Dream'



*Brassica rapa* 'Violetta'



*Viola x wittrockiana*  
'Ultima Radiance New Viole'



*Viola hybrida*  
'Penny Denim Jump Up'



*Nemesia fruticans* 'Royal'



*Allium christophil*



*Lupinus Texensis*



*Viola x wittrockiana*  
'Panola Deep Blue Blotch'



*Viola x wittrockiana*  
'Miskers Light Blue'

**CC S/E Raised Bed  
118**



*Lobularia maritima*  
'Clear Crystal White'



*Molucella laevis*  
'Bells of Ireland'



*Tulipa* 'Deirdre'



*Tulipa* 'Madonna'



*Brassica rapa* 'Tah Tsai'



*Hyacinthus orientalis*  
'Yellow Queen'



*Brassica oleracea*  
'Small Miracle'



*Brassica juncea*  
'Green Wave'



*Cichorium endivia* 'Rhodos'



*Antirrhinum m*  
'Ribbon Yellow'



*Tulipa* 'Fringed Elegance'



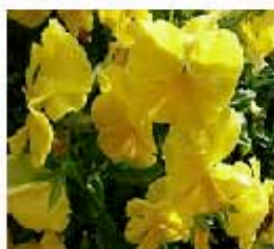
*Papaver nudicaule*  
'Champagne Bubbles Yellow'



*Primula acaulis* 'Primlet  
Lemon Shades'



*Viola hybrida*  
'Sorbet Lemon Chiffon'



*Viola x wittrockiana* 'XXL Yellow'

**CC S/W Raised Bed  
118**



*Lobularia maritima*  
'Clear Crystal White'



*Molucella laevis*  
'Bells of Ireland'



*Tulipa* 'Deirdre'



*Tulipa* 'Madonna'



*Brassica rapa* 'Tah Tsai'



Dutch Iris 'Rendez Vous'



*Brassica oleracea*  
'Small Miracle'



*Brassica juncea*



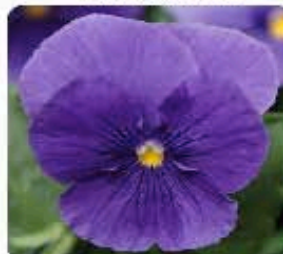
*Ochorium endivia* 'Rhodos'



*Hyacinthus orientalis*  
'Crystal Palace'



*Nemesis fruticans* 'Royal'



*Viola x wittrockiana*  
'Karma True Blue'



*Viola* 'Sorbet Marina Babyface'



*Lupinus Texensis*

**Gallery Fountain Beds**  
119



Tulipa 'Come Back'  
Darwin, mid



Tulipa 'Day Dream'  
Darwin, mid



Tulipa 'Day Dream'  
Darwin, mid



Viola x wittrockiana 'XXL Yellow'



Nemesia fruticans  
'Royal'

**Gallery Baskets**  
123



Nemesia fr  
'Royal'



Anthirrhinum m  
'Luminaire Yellow'



Lobelia erinus  
'Waterfall Blue'

**Gallery Urns**  
123



**Gallery Vertical Walls**

124



*Viola wittrockiana*  
'Matrix Morpheus'



*Brassica juncea*  
'Green Wave'



*Lactuca sativa*  
'Revolution'



*Linaria macrocana* 'Fantasy  
Violet w/Yellow Eye'



*Cichorium endivia* 'Rhodos'



*Viola cornuta* 'Venus Deep Orange'

**CC Entrance to Classroom Pots**

117



*Tulipa* 'Black Hero'



*Allium atropurpureum*



*Hyacinthus orientalis*  
'carnegie'



*Tulipa* 'White Parrot'



*Nemophila* 'Baby  
Black Eyes'



*Lobularia maritima*  
'Clear Crystal White'



*Lactuca sativa*



*Matthiola incana*

'Revolution'

**CC N/E set of 3 pots  
117**



Tulipa 'Professor Rontgen'



Hedera helix 'Tear Drop'



Hyacinthus orientalis  
'Red Diamond'



Antirrhinum majus  
'Solstice Red'



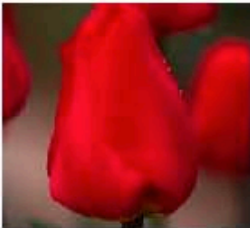
Papaver nudicaule  
'Champagne Bubbles Orange'



Brassica juncea 'Green Wave'



Cichorium endivia 'Rhodos'



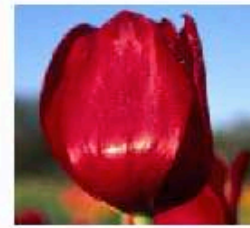
Tulipa 'Apeldoorn'



Lactuca sativa 'Revolution'



Diascia barberae 'Wink Garnet'



Tulipa 'Kingsblood'



Erysimum Citrona Orange

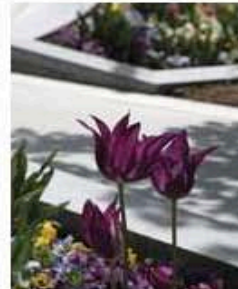


Viola x wittrockiana 'Whiskers Orange'

**CC N/W set of 3 pots  
117**



Hyacinthus or





Antirrhinum majus  
'Solstice Purple'



Brassica juncea  
'Green Wave'



Cichorium endivia  
'Rhodos'



Allium christophii



Brassica rapa 'Violetta'



Viola x wittrockiana  
'Ultima Radiance New Viola'



Viola hybrida  
'Penny Denim Jump Up'

CC S/W set of 3 pots  
117



Pisum sativum 'Oregon Giant'



Hedera Helix  
'Teardrop'



Tulip 'Madonna'



Hyacinthus orientalis 'Crystal Palace'



Brassica oleracea  
'Small Miracle'



Brassica juncea  
'Green Wave'



Cichorium endivia 'Rhodos'





Nemesia fruiticans 'Royal' Lupinus Texensis

CC S/E set of 3 pots  
117



Pisum sativum 'Oregon Giant'



Hedera Helix



Tulipa 'Spring Green'



Tulipa 'Fringed Elegance'



Brassica oleracea  
'Small Miracle'



Brassica juncea  
'Green Wave'



Cichorium endivia 'Rhodos'



Antirrhinum rr  
'Ribbon Yellow'



Hyacinthus orientalis  
'Yellow Queen'



Primula acaulis 'Primlet  
Lemon Shades'



Papaver nudicaule  
'Champagne Bubbles Yellow'



Viola hybrida  
'Sorbet Lemon Chiffon'

Vista Hanging BSK quantity-6



Calibrachoa hybrid  
Superbells Trailing Blu



Lobularia maritima Clear  
Crystal Lavender Shade Alyssum



Ajuga Tenorri 'Dixie Chip'

Vista Hanging BSK quantity-6



Lobularia maritima Clear  
Crystal Lavender Shade Alyssum

Vista "L" Beds left and right

129



Fritillaria imperialis 'Au'



Matthiola incana



Trailing Dark Blue Lobelia



Lupinus Texensis



**Vista 41" Bed**

**129**



Tulipa 'Professor Rontgen'



Tulipa 'Andre Rieux'



Muscari armeniacum



Linaria hybrida 'Enchantmer'



Hedera helix  
'Tear Drop'



Erysimum Citrona Orange

**Container Court Hanging Baskets**

**120**



Brassica juncea Red G



## Spring Bulbs 2011 / Circle Garden

Quadrants: Beds 351-354 week 15, (April 10)



Tulip 'French Blend Rose' 24" late  
14,000 \$3.33 Colorblends



Heuchera 'Midnight Rose'  
10" (under cornus)  
240 Walters svt 4"

Fountain: Bed 345 week 15, (April 11)



Tulip 'Best Purple' 18" mid  
1250 \$2.28 Colorblends



Tulip 'Double Maureen'  
1250 B&B \$1.00 late



Myosotis sylv. 'Early Bluebird'  
768 / 24 flts. ssvd2

## Spring Bulbs 2011: Circle Garden

### Boxwoods: Bed 343 week 16, (April 18)



*Digitalis purpurea* 'Shirley Hybrids'  
Indents of Boxwoods  
200 / C1200 KVB (121rg. Pots / Indent)



*Brassica oler.* 'Ruby Perfection'  
Narrow sections of Boxwoods  
140 / CO400 JSS (lrg. like Fall)



*Calendula* 'Solar Flashback'  
20'' mix w/cabbage  
100 / ko6.5'' Johnny's (lrg. w/ buds)

### Boxwood Borders and Front Entrance: Beds 344 & 346 week 15, (April 11)



*Allium* 'Globemaster'  
24-30'' Late DEV  
75 \$4.78



*Digitalis grandiflora* 'Yellow'  
Swallowtail  
40 / C1200



*Viola Panola* BAL  
'Deep Blue Blotch'  
2880 / cp24 bed 344  
960 / cp24 bed 346



*Myosotis* 'Early Bluebird'  
planted amongst pansies  
160 / svd2 GER bed 344  
96 / svd2 GER bed 346

## Spring Bulbs 2011: Circle Garden

### Secret Square: Bed 349



Tulip 'Exotic Emperor'  
15" Early DEV \$ .49  
700



Tulip 'Inzell'  
18" Mid DEV \$ .36  
700



Tulip 'Double Maureen'  
24" Late B&B \$1.00  
700

### Secret Border: Bed 347



Allium 'Globemaster'  
24-30" Late DEV \$4.78  
40 bulbs



Salvia argentea 10  
(dig from fall planting and grow  
large early in production)



Viola 'Sorbet Ocean Breeze Mix'  
6-8" BAL  
Cp24 30 flts. / 480 plts.



Hyacinthoides hispanica 'Excelsior'  
10" B&B \$ .48  
300 bulbs



Primula 'Potsford White'  
20" Barnhaven  
ko6 / 30 plants

## Spring Bulbs 2011: Circle Garden

### Secret Square: Bed 350



Tulip 'Pink Impression'  
22" Mid DEV \$.32  
700



Tulip 'Double Toronto'  
10-14" Early B&B \$.58  
700



Tulip 'Candy Apple Delight'  
14-18" Mid B&B \$.70  
700

### Secret Border: Bed 348



Anemone cor. 'Giant Rosea'  
12" BAL  
ko6.5"



Salvia argentea 10 3 gal.  
(dig from fall planting and grow  
large early in production)



Camassia leichtlinii 'Alba'  
24-36" B&B \$1.14  
ends of benches 40 ko6.5" 3/pot

### week 15, (April 13)



Myosotis 'Wake Up White'  
6-8" PW 3 flts. / 96 plts.  
Svd 2



Primula pulverulenta  
20" Barnhaven  
ko6 / 30 plts.



Primula 'Bartley Strain'  
20" Barnhaven  
ko6 / 30 plts.



Viola 'Dynamite Beacon Rose'  
6" BAL  
cp24 15 flts. / 360

English Walled Garden McGinley Pavilion Spring Annuals 2011

**PERGOLA BEDS, plants will be blended into beds according to height 27**



PRIMULA DOUBLE  
PRIMROSE BLUE SAPPHIRE

8" shade loving



ANCHUSA CAPENSIS 'BLUE  
ANGEL'

15"



ASPERULA ORIENTALIS  
'BLUE WOODRUFF'

12" shade loving



VERONICA PEDUNCULARIS  
'BIG BLUE' 'VEROBIBBLUE'

8-10" prostrate



LUPINUS REGALIS  
'THOMAS CHURCH'

24" back of bed



SENECIO STELLATA  
'GIOVANNA'S SELECTION'  
'TALL CINERARIA'

30" back of bed



LATHYRUS NERVOSUS  
'LORD ANSON'S BLUE PEA'

climbing

Containers will rotate through out spring season, 3-5 containers will be on display at a time. 38



AQUILEGIA PAGODA 'BLUE &  
WHITE'

12-16"  
early, 1 container



POLEMONIUM YAZOENSE  
'PURPLE RAIN STRAIN'

24" BRONZE LEAVES  
mid, 1 container



PRIMULA MACROPHYLLA

TRIAL LOOKS COOL  
late, 1 small container

Over wintered specimen containers 38



CEANOTHUS  
CBG OVER WINTER IN  
mid, 1 specimen container



TECOPHILA  
CBG SPECIMEN  
order more for fill in 25



ROSEMARY OFFICINALIS  
CBG OVER WINTER

Forced bulbs 1 container of each used in rotation over winter in clay at production, 38



GEISSORHIZA  
SPLENDIDISSIMA  
SPECIMEN BULB



LAPERIROUSIA OREGENA  
3" SPECIMEN CLAY

English Walled Garden McGinley Pavilion Spring Annuals 2011

DAISY

Plants symmetrically planted in 4 central beds 24



LAYIA GLANDULOSA  
'WHITE TIDYTIPS'

15"



ARCTITUS HYBRIDS 'THE  
RAVERS' 'PINK SUGAR'

10-14"

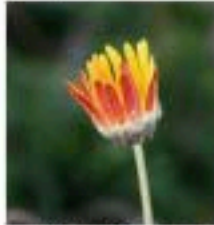
Center urn bed plants 24



ANEMONE BLANDA 'BLUE  
SHADES'

3-4" early spring

Daisy stair containers 36



URSINIA TENUIFOLIA

nodding head, flowers all



OSTEOSPERMUM HYBRID  
'SUNNY ALEXIS'

6-12"



NEMESIA 'JUICY FRUITS'  
'PAPAYA'

8-12"



NARCISSUS 'MARY GAY'  
'LURETTE'

EARLY TO MID 14-16"

ENGLISH OAK MEADOW 33



PAPAVER NUDICALE  
'CHAMPAGNE BUBBLES'  
'MIXTURE IMPROVED'  
BAL  
16"

English Walled Garden McGinley Pavilion Spring Annuals 2011

COTTAGE BEDS 30



CAMPANULA MEDIUM

2-3'



MATTHIOLA BICORNIS  
'EVENING STOCK'

12-24"



ESCHSCHOLZIA  
CALIFORNICA  
'CHAMPAGNE & ROSES'



MYOSOTIS WAKE UP 'PINK'

6-8" TRAILING



LOBULARIA MARITIMA  
CLEAR CRYSTAL  
'LAVENDER SHADES'



DELPHINIUM CONSOLIDA  
'LILAC DOUBLE'

3'



BELLIS POLAR  
'STRAWBERRIES & CREAM'

4-8"



LACTUCA SATIVA  
'SUCRINE'



CORIANDRUM SATIVUM

Shady areas near rose



PRIMULA POLYANTHA  
'MUTED VICTORIANS'



PRIMULA BARTLEY STRAIN

Grow on rose arbor



LATHYRUS ODCORATUS  
'MATUCANA'

COTTAGE CONTAINERS 34



CAMPANULA MEDIUM

2-3'



LINANTHUS  
GRANDIFLORUS 'GRAND  
LINANTHUS'

14-20"  
grow as large as possible



DIANTHUS 'INCHMERY'

12-14"



LATHYRUS ODCORATUS  
'AZUREUS'

1-2' EDGING



STRAWBERRY 'PRETTY IN  
PINK F1'

TRAILING

Hyper-tufa shade containers



PRIMULA AURICULAS 3010-  
LARRY  
IN HYPERTUFA



PRIMULA AMETHYST  
COWICHAN  
IN HYPERTUFA

English Walled Garden McGinley Pavilion Spring Annuals 2011

COURTYARD 21



OSTEOSPERMUM  
SOPRANO 'VANILLA  
SPOON'  
12-20"  
accent plant



IBERIS UNBELLATA  
'ICEBERG' 'GIANT  
HYACINTH FLOWERED'  
15"  
light filler front beds



PRIMULA ACAULIS PRIMLET  
WHITE  
5"  
planted under apple tree only

Containers for Courtyard 3 plants evenly mixed 35



RANUNCULUS ASIATICUS  
MACHE 'RED'  
12-16"



LINARIA RETICULATA  
'VELVET RED'  
12"



PAPAVER COMMUTATUM  
'LADYBIRD'  
15" NEAT

VISTA 15



MYOSOTIS WAKE UP 'BLUE'

6-8" TRAILING



DIANTHUS CLOVE  
'CHARLES MUSGRAVE'

12"



CYNOGLOSSUM AMABILE  
'BLUE SHOWERS' 'CHINESE  
FORGET ME NOT'

3'



RANUNCULUS ASIATICUS  
MACHE PASTEL MIX

12-16"



TULIPA 'THE LIZARD'

LATE, 20-24"

EOM step containers



RANUNCULUS ASIATICUS  
MACHE PASTEL MIX  
12-16"



CALIBRACHOA 'VOODOO'  
6-10"



IRIS BUCCHARICA  
8"  
EARLY-MID SEASON

English Walled Garden McGinley Pavilion Spring Annuals 2011

Perennial beds 5



DELPHINIUM AJACIS  
'KINGSIZED SCARLET'  
2-3"



CONSLIDA AMBIGUA 'BLUE  
BELL'  
3"



PAPAVER RHOEAS  
'FALLING IN LOVE'  
18-30"



ANTHIRRHNUM DOUBLE  
'AZALEA APRICOT'  
36"



NEMESIA JUICY FRUITS  
'KUMQUAT'  
8-12"

Blue Gate containers 37



ROSEMARINUS  
OFFICINALIS 'TUSCAN  
BLUE'



TULIPA 'PEACH BLOSSOM'  
1890



NEMESIA SUNSATIA  
'PEACH'



OSTEOSPERMUM SUNNY  
'ELENA'

12" EARLY

12"

8-14"

Combined all 3 plants into one container next to the rosemary

Linden Alee stair containers 4



CYTISUS LILAC TIME  
'DELMOREI HYBRID'

CBG OVER WINTER

Overlook to Lakeside 3 square containers 8



BOXWOOD

CBG STOCK

SITTING GARDEN CONTAINERS 75



KALMIA LATIFOLIA  
'OLYMPIC FIRE'  
LARGE SPECIMEN



AQUILEGIA VULGARIS  
'CLEMENTINE RED'



NEMESIA HYBRIDS JUICY  
FRUITS 'WATERMELON'  
8-12"

ONE CONTAINER FOR EACH PLANT, 3 TOTAL

English Walled Garden McGinley Pavilion Spring Annuals 2011

McGINLEY BEDS



VIOLA SORBET COCONUT



TULIPA 'PURISSIMA' (WHITE)  
early to mid 16"



TULIPA 'SWAN WINGS'



TULIPA 'WHITE PARROT'  
mid to late 20"

McGINLEY CONTAINERS



RHODODENDRON  
re-evaluate plants size



ZANTEDESCHIA



POLEMONIUM CAERULEUM  
2"



DICENTERA SPECTABILIS



AQUILEGIA SWAN WHITE  
16"



RANUNCULUS ASIATICUS  
10-12"



OSTEOSPERMUM  
12-20"



DIASCIA BARBERAE  
7-10"



HEDERA CANARIENSIS  
TRAILING



TULIPA 'SWAN WINGS'  
mid 20" new on market  
Forced

FVG Spring Annuals 2011

Bed 307



Brassica rapa  
'Mei Qing Choi'



Tulipa 'Queen of Night'



Tulipa 'Virchic'

Bed 311



Vicia faba 'Windsor'

Bed 316



Brassica oleracea  
'Red Express'



Brassica oleracea  
'Early Jersey Wakefield'



Beta vulgaris  
'Pronto'



Beta vulgaris  
'Boro'

Bed 316T



Pisum sativum  
'Sugar Snap'



Lobularia maritima  
'Easter basket mix'

Bed 317



Papaver laciniatum  
'Lauren's Grape'



Medicago sativa

Bed 325: Looseleaf lettuce



Lactuca sativa  
'Bronze Arrowhead'



Lactuca sativa  
'Flame'



Lactuca sativa  
'Red Rapids'



Lactuca sativa  
'Gold Rush'



Lactuca sativa  
'Red Velvet'

Bed 326: Asian Greens (Pac Choy)



Brassica rapa  
'Fuyu Shomi'



Brassica rapa  
'Joi Cho'



Brassica rapa  
'Black Summer'



Brassica rapa  
'Red Cho'



Brassica rapa  
'Win-Win Cho'

Bed 327



Brassica oleracea  
'Churchil'

Bed 329



Spring Green Manure Mix

Bed 330



Brassica oleracea  
'Top Bunch'



Cynara scolymus  
'Tempo'



Allium portum  
'King Richard'



Brassica oleracea  
'Red Express'



Lactuca sativa  
'Cherokee'



Lobulana maritima  
'Easter basket mix'

561: Entrance Containers



Lactuca sativa  
'Red Rosie'



Viola X wittrockiana  
Matrix Clear Mix



Lactuca sativa  
'Claremont'

KOW: Kristie's Office Window



Lactuca sativa  
'Claremont'



Brassica juncea  
'Giant Red'



Viola X wittrockiana  
Matrix Light Blue



Viola X wittrockiana  
Matrix Clear Yellow

Office Baskets



Lactuca sativa  
'Oscarde'



Viola X wittrockiana  
Matrix Clear Mix

564: Entrance Beds (serpentine and elevated)



Lactuca sativa  
'Rouge D'Hiver'



Petroselinium crispum  
'Titan'



Lactuca sativa  
'Pablo'

564 (adjacent to entrance beds)



Lobularia maritima  
'Easter basket mix'



Lactuca sativa  
'Pablo'

Entrance Baskets



Petroselinium crispum  
'Titan'



Viola X wittrockiana  
Matrix Clear Mix



Brassica juncea

VER: Living Wall



*Viola tricolor*  
Heartsease 'Bowles Black'

WIN: Window Boxes



*Brassica rapa*  
'China Choy'

*Brassica juncea*

*Brassica juncea*

*Viola cordata*  
'Primrose Babyface'

10 Baskets above window boxes



*Viola cordata*  
'Primrose Babyface'

Mesclun mix

5 Baskets above window boxes



*Viola cordata*  
'Yellow Frost'

Mesclun mix

Bed 572



*Brassica oleracea*  
'Caraflex'

Bed 577



*Aquilegia hybrida*  
'Swan Pink Yellow'

TRE: West trellis



*Tulipa* 'Gavota'

CF: Heidoom lettuce



*Lactuca sativa*  
'Forellenschuss'

*Lactuca sativa*  
'Merveille Quatre'

Roof Containers Spring 2011

Purple Pak Choi



Narcissus 'Yellow  
Cheerfulness'  
16"



Narcissus 'Cassatta' 12-24"



Tulip 'Purple Dream' 24"



Syringa  
'Excel'



Osaka Purple Mustard

Salix gracilistyla  
'Melanostachys'



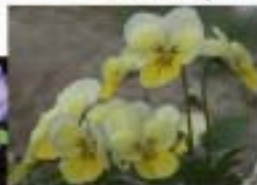
'Apoilo Yellow'  
Snapdragon



Tulip 'Honky  
Tonk' 10"



Iris cristata 6"

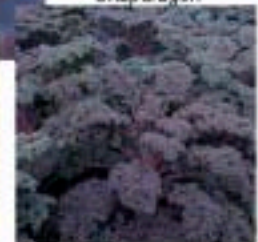


Viola 'Lemon Chiffon Sorbet'

Lathyrus  
odoratus 'Our  
Harry'



Tulip 'Verona' 10"



'Redbor' Kale

\*Both styles will have height from woody shrubs and 'Apoilo Yellow' snapdragons in the center with masses of two different yellow tulips and narcissus below. Lilac and purple shades will accent in varying heights in the forms of leafy vegetables, sweet pea which will flow over the edges, iris cristata, and tall lily flowered tulips. Pale yellow Pansy cornuta will bloom continuously at the base.

Heritage Troughs  
 Spring 2011  
 as of 05/07/10



Tulpe - Peter de Leur  
 Brentandbeckysbulbs.com  
 10-18" mid-spring



Tulpe - provensal 'Shagun'  
 Brentandbeckysbulbs.com  
 10-12" mid-to-late spring



Muscari macrocarpum 'Golden Fragrance'  
 Brentandbeckysbulbs.com  
 6-8" mid-to-late spring



Muscari - common 'Flarestar'  
 Brentandbeckysbulbs.com  
 4-6" very late spring



Auricula Taffels  
 vannewen.com  
 6"



Auricula 'Old Mustard'  
 edelweisparentals.com  
 5"



Linaria Fantasy Yellow  
 RCOFlora.com  
 10-15"



Village Yellow Osteospermum  
 Ballroot.com  
 10-16" mound/decussating



Diastylis barbosa Ramona Orange  
 Ballroot.com  
 7-8" trailing



Auricula 'Coffee'  
 edelweisparentals.com  
 5"



Viola x wittrockiana Paula B? Rose Hoode  
 Ballroot.com  
 6-8" mounded



Hutchins 'Paris'  
 gardenlights.com  
 7-8" foliage 14-15" airy flower

Changes from 05/03/10 Version:  
 Removed Erysimum species Citrona Orange  
 Removed Bellis perennis Medicea Rose  
 Changed Linaria Enchantment to L. Fantasy Yellow  
 Added Auricula 'Old Mustard'  
 Added Auricula 'Coffee'  
 Added Hutchins 'Paris' (to add a little airy height, and an added foliage form)



***Forsythia***  
**'Gold Tide'**  
C.J Flore  
3- 24" containers  
5- 18"containers

**First Spring Installation**



***Cytissus canariensis***  
**'Yellow'**  
CBG Stock  
10 c1200

**Second Spring Installation**



***Hedera helix***  
**'Gold Child'**  
Tropical Trade  
24 K04

Rose Garden Spring 2011

---

Beds in Rose Terrace



Tulip Three Queens



Arctotis hybrid 'Pink Sugar'



Papaver nudicaule 'Champagne Bubbles'



Petroselinum crispum 'Krausa'

---

Containers in Rose Terrace



Arctotis hybrid 'Pink Sugar'



Papaver nudicaule 'Champagne Bubbles'



Petroselinum crispum 'Krausa'



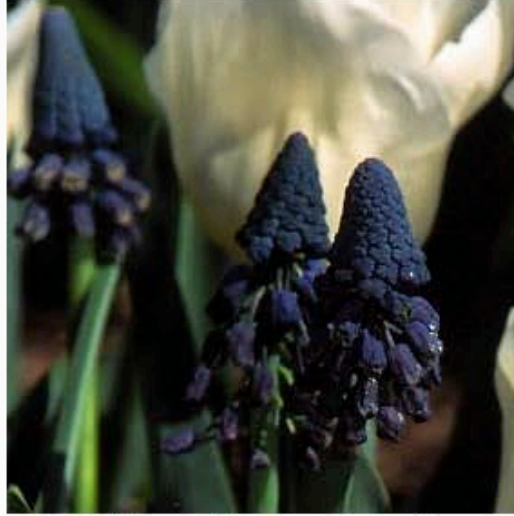
Narcissus 'Erlcheer'



Devon Cottage™ Rosie Cheeks Dianthus

## Rose Garden Spring Wow!!

---



### *Bellevalia pycnantha*

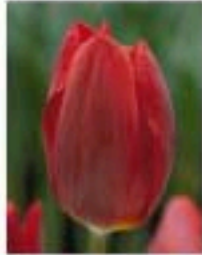
Muscari-like, Christmas tree shaped, opaque bluish/black flowers with tiny yellow margins; deep green, glaucous foliage adds to their beauty; great Heirloom for rock gardens or borders; 8"-12"; zones 5-8; mid - late spring;

## Spring 2011 / Sensory Garden

Fragrance Bed: 451



Tulip 'Brown Sugar'  
18" Mid / Late DEV  
200 \$32 fragrant



Tulip 'Couleur Cardinal'  
14-18" Mid DEV  
125 \$35 fragrant



Tulip 'Purple Prince'  
12-14" Early / Mid  
200 \$30 frg. DEV



Narcissus 'Martinette'  
16" Early / Mid DEV  
200 \$46 fragrant



Lathyrus odor. 'Lord Nelson'  
Annie's fragrant  
15 svd4



Hyacinth 'Peter Stuyvesant'  
10" Mid DEV  
100 \$65 fragrant



Tulip 'Rainbow Warrior'  
22" Late KVB  
125 \$.38 fragrant



Tulip 'Hollands Glory'  
24" Late KVB  
200 \$36 fragrant



Fritillaria 'Rubra Maxima'  
36" Mid / Late DEV  
75 \$3.68 fragrant



Tulip 'Caravelle'  
16-18" B&B  
125 \$.69



Cladanthus arabicus  
24" IVY fragrant  
15 svd4



Dianthus 'Sweet F1 Red'  
18" BAL fragrant  
45 svd4



Foenicullum v. 'Bronze'  
24" GER fragrant  
15 c400



Calendula 'Golden Prince'  
20-24" GER fragrant  
30 svd4



Viola c. 'Venus Deep Orange'  
6-8" BAL fragrant  
96 cp24



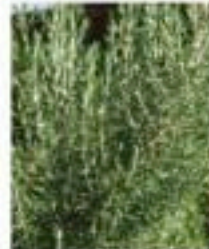
Erysimum 'Citrona Orange'  
10-12" BAL fragrant  
45 svd4



Primula veris  
8-10" INT fragrant  
45 svd4



Mithiola 'Vintage Burgundy'  
15" BAL fragrant  
45 svd4



Rosemarinus o. 'Tuscan Blue'  
18-24" CBG fragrant  
7 c600



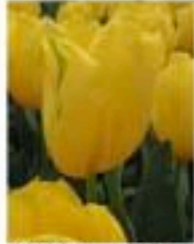
Viola 'Panola Yellow Blotch'  
6-8" BAL fragrant  
96 cp24

## Spring 2011 / Sensory Garden

Color Bed: 452



Tulip 'Orange Princess'  
14" Mid/Late DEV  
125 \$.56



Tulip 'Strong Gold'  
16" Mid/Late DEV  
125 \$.43



Tulip 'Black Parrot'  
18-20" Late DEV  
125 \$.56



Narcissus 'Pappy George'  
14-16" Mid DEV  
300 \$.58



Calendula off. 'Chrysantha'  
28" T&M  
30 svd4



Tulip 'Queen of Night'  
24" Late DEV  
125 \$.31



Tulip 'Lightning Sun'  
18-20" Mid/Late KVB  
200 \$.48



Tulip 'Big Smile'  
24" Late DEV  
125 \$.34



Fritillaria 'Rubra Maxima'  
36" Mid/Late DEV  
75 \$3.68



Calendula off. 'Porcupine'  
18" T&M  
30 svd4



Erysimum 'Citrona Orange'  
10-12" BAL  
45 svd4



Mathiola 'Vintage Burgundy'  
15" BAL  
45 svd4



Lupinus luteus  
24" CBG  
22 svd4



Anemone 'Mona Lisa Scarlet'  
12-15" BAL  
15 k6 9 bulbs/pot



Viola 'Delta Pure Golden Yel.'  
6" BAL  
96 cp24



Primula 'Wine Flame Shades'  
6" Goldsmith  
36 svd3



Dianthus 'Sweet Scarlet'  
18" BAL  
30 svd4



Ranunculus 'Mache'Yellow'  
14" BAL  
30 svd4



Primula ver. 'Sunset Shades'  
8" INT  
45 svd4



Layia platy. 'Tidy Tips'  
18" ANN  
30 svd4

## Spring 2011 / Sensory Garden

Texture Bed: 453



*Nigella hisp.* 'Curiosity'  
Seed Sa. 18-24" 27/svd3



Tulip 'Flaming Parrot'  
DEV 22" \$.36 L  
120



Allium 'Globemaster' 50  
24-36" B&B \$5.00 L  
50



Tulip 'Black Parrot'  
DEV 20" ML \$.42 L  
120



Calendula 'Kabl. Lem. Yellow'  
Plants of Dist. 2'



*Cladanthus arabicus*  
T&M 24" frg. 12/svd4



Tulip 'Rococo'  
DEV 18" \$.31 L  
120



*Euphorbia amy.* 'Eranthis'  
Euro Am. 18-20"



*Anthriscum* 'Solst. Lemon'  
Pan Am 16-20"



*Foeniculum vul.* 'Bronze'  
GER 12/1 gal 24"



Tulip 'Pieter de Leur'  
B&B 10-15" \$.53 EM  
120



Kale 'Black Tuscany'  
T&M



Tulip 'Mon Amour'  
KVB 16" \$1.01 L  
100



*Dianthus barb.* 'Sweet Red'  
BAL 14-16" 36/svd4



Anemone 'Lord Lieutenant'  
B&B 12-15" \$.17 21/ k5  
9bbs x 15 pots=135 bbs



*Eryngium* 'Blue Hobbit'  
BAL 12" 45/svd4



Primula 'Barnhaven Gold'  
Barnhaven



*Salvia argentea*  
BLU



Bellis 'Bellissima Red'  
Pan Am 6"



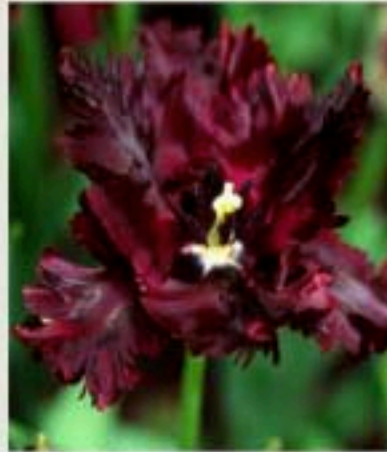
*Petroselinum* 'Ext. Curled'  
GER 10-15"

## Spring 2011 / Sensory Garden

Sycamore Entrance – Bed 455



Tulip 'Christmas Orange' 600  
DEV 16" EM \$ .53 fragrant



Tulip 'Black Parrot' 600  
DEV 20" ML \$ .42



Linaria mac. 'Enchantment'  
svd3 396 plts. 14" fragrant 22 flats

West Flower Walk

Spring 2011



Pansy Delta Fire  
Ball Seed  
90 CP24 flats (2160 total)



Tulip 'Ronaldo'  
20"  
Mid  
DeVroomen Holland  
Qty: 300



Tulip 'Daydream'  
22"  
Mid  
VanBloem  
Qty: 400



Tulip 'Temple of Beauty'  
30"  
Late  
VanBloem  
Qty: 700

Total Bulbs: 1400

## BULB GARDEN ANNUALS SPRING 2011

### Bed 46 – Entry Bed



Exotic Emperor  
Early-Mid 13-17"



Rem's Favourite  
Mid-Late 16"



Viola Sorbet  
Lilac Ice

### Bed 45 – Under Malus Selkirk



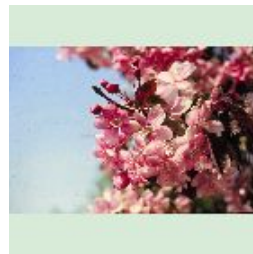
Pansy  
XXL White Clear



Tulipa 'Green Wave'  
May 20"  
John Scheepers



Queen of Night  
Late 20-22"



Malus Selkirk

'Queen of Night' to be dotted throughout bed.

### Bed 43 – North Side, Near FVG Bridge



Tulipa 'Brown Sugar'  
Mid 14-16"



Tulipa 'Melony Day'  
Mid 22"

Plant 'Brown Sugar' heavier so it is a carpet beneath 'Melony Day'.

### Bed 61 – North Side, Across From 43



Tulipa greigii  
'Fur Elise'  
Mid 8-12"



Hyacinthus orientalis  
'Gypsy Queen'  
Early-Mid 10"



Viola  
'Sorbet Lemon Chiffon'

**Bed 51 – South Side, Across From 55**



Tulipa 'Crème Upstar'  
Late April 14"



Tulipa batalinii  
'Bronze Charm'  
Mid 4-6"



Tulipa whittallii  
Mid-Late 8-12"



Tulipa sylvestris  
Mid-Late 8-12"

**Bed 55 – South Side, Center**



Calendula officinalis  
'Sherbet Fizz' 16-18"



Tulipa 'Aleppo'  
May 20"

**Bed 41 – Raised Circle**

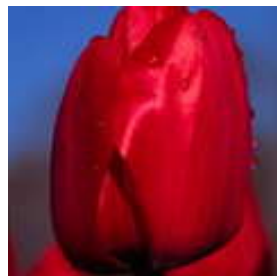


Pansy 'Frizzle Sizzle Blue'

**Bed 42 – Triangle Bed**



Lactuca sativa  
'Rouge D'Hiver'



Tulipa 'Come Back'  
Mid 16 -18"

I had to sub 'Come Back' for 'Couleur Cardinal'  
due to ht. issues w/the lettuce.

**Entrance Window Basket – BAM 12**



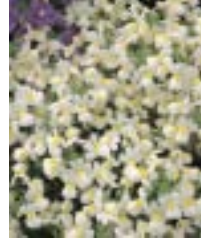
Viola Sorbet  
Lilac Ice



Tulipa humilis  
'Persian Pearl'  
3-4"



Muscari comosum  
'Plumosum'  
4-6"



Nemesia fruticans  
'Innocence Compact'

**Lower Walk Hanging Baskets – BAM 18**



Tulipa 'Lady Jane'  
8-10"  
Mid-Late



Diascia hybrid  
'Flying Colors Coral'



Narcissus  
'Little Rusky'  
4-6" Mid



Crocus sieberi  
'Firefly'  
3-6" Early



Viola  
'Sorbet Antique Shade'



Tulipa 'Little Beauty'  
Mid 4-6"

**Miscellaneous Annuals**



Anemone coronaria  
'Admiral'



Pansy  
'Panola Pink Shade'



Nemesia hybrid  
'Dazzle Me Lilac'



Antirrhinum majus  
'Snapshot Yellow'

# LANDSCAPE GARDEN SPRING 2011 ANNUALS

## Bed 147 – Informal Herb Garden



*Calendula officinalis*  
'Radio'  
Seed Savers Exchange

## Bed 146 – Fragrant Herb Garden



*Matthiola bicornis*  
Seeds of Change



*Viola cornuta* 'Etain'

## Bed 148 – Formal Herb Garden



*Pelargonium x domesticum*  
'Georgia Peach'  
Sequim Rare Plants

## Bed 132 – Bard Pool



Existing Maple



*Eschscholzia californica*  
'Rosa Romantica'  
Select Seeds

## Bed 139 – Entry Bed



Exotic Emperor  
Early-Mid 13-17"



Rem's Favourite  
Mid-Late 16"



*Viola Sorbet*  
Lilac Ice

## Bed 134 – Oval Bed



Existing Picea



*Campanula collina*  
12"

## Bed 139 – Traditional Bed Tuteurs



*Lathyrus odoratus*  
'America'  
Annie's Annuals



*Lathyrus odoratus*  
'Matucana'  
Diane's Flower  
Seeds



*Lathyrus odoratus*  
'Royal Red'  
Diane's Flower  
Seeds



*Lathyrus odoratus*  
'Mammoth Navy Blue'  
Annie's Annuals

Can be planted in  
the Rock Garden.



**NORTH STAIR  
CONTAINERS  
SPRING 2011**



*Ranunculus asiaticus*  
Bloomingdale™ 'Tangerine'  
Ball Seed  
12" Tall



*Matthiola incana*  
'Opera Ranzosca'  
Ball Seed  
10-25" Tall



*Papaver nudicaule*  
Champagne Bubbles 'Pink'  
Ball Seed  
15" Tall



*Papaver nudicaule*  
Champagne Bubbles 'Orange'  
Ball Seed  
15" Tall



*Papaver nudicaule*  
Champagne Bubbles 'Scarlet'  
Ball Seed  
15" Tall



*Lathyrus odoratus*  
'Henry Eckford'  
Annie's Annuals



*Primula acutilis*  
Prindel™ 'Sunrise'  
Ball Seed  
5-6" Tall



*Syringa* 'George Eastman'



*Forsythia x intermedia*  
'Coursol'

Forsythia in large  
containers first, replace  
with Syringa

## CRESCENT BEDS SPRING 2011



Tulipa 'Gudeshnick'  
34" Tall  
Colorblends  
1000/\$310



**Spring Annuals 2011**  
**Visitor Center Containers**



Osteospermum  
'Serenity Sunset'



Cytissus 'Minstead'



Viola 'Panola Lilac Shades'



Lathyrus 'Painted Lady'

**Spring 2011**  
**Visitor Center Front Bed Shrub Display**



Pieris 'Forest Flame'



Nemesia 'Juicy Fruit Kumquat'

**Spring Annuals 2011**  
**Hayracks and Side Planters**  
**First Revision**



Dimorphotheca hybrida  
'Peach Symphony'  
Proven Winners



Linaria 'Enchantment'  
Ball Seed



Osteospermum  
'Astra Sunset Purple'  
Park Seed



Viola x wittrockiana  
'Girlfriends Mix'  
Park Seed



Lathyrus  
'Mahogany Cupid'  
Fragrant Garden

**Spring 2011 Annuals**  
**Harris Bed**

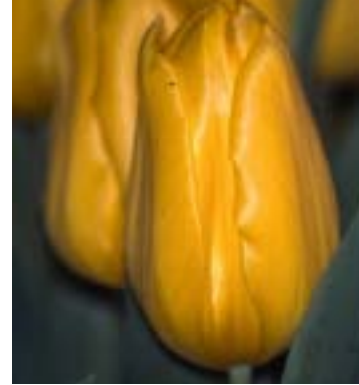


Papaver nudicaule  
'Champagne Bubbles'  
Chiltern

Spring 2011 Annuals  
Center for Teaching and Learning  
Front Beds and Deck Containers



*Tulipa* 'Jan Reus'  
Mid season 12 -24"



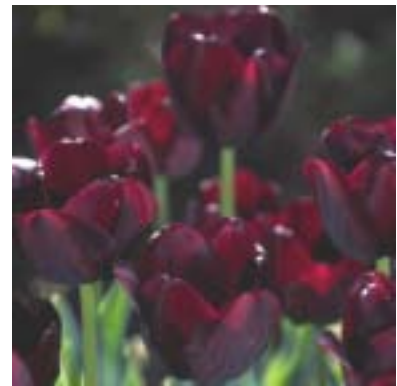
*Tulipa* 'Strong Gold'  
Mid season 12 – 24"



*Viola x wittrockiana*  
'Pansy Matrix Red Blotch'



*Antirrhinum majus*  
'Luminaire Harvest red  
Snapdragon'



*Tulipa* 'Queen of night'  
Late season 12-24"

# Spring Annuals 2011

## Lake Cook Entrance/Gatehouse



*Tulipa* 'Gabriella'  
Mid-Season 12 -24"



*Tulipa* 'Queen of Night'  
Late Season 12-24"



*Viola x wittrockiana*  
'Pansy Matrix Raspberry  
Sundae mix'



*Tulipa* 'Menton'  
Late-Season 24+"